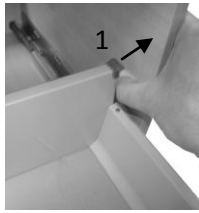


TIROIRS

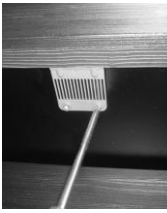
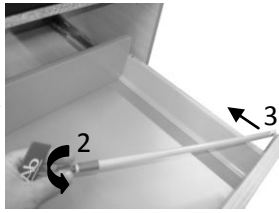
DEMONTAGE DE LA FAÇADE



1/ Enlever les caches



2/ Retirer les ridelles



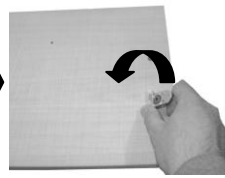
3/ Dévisser le stabilisateur de façade sous le tiroir



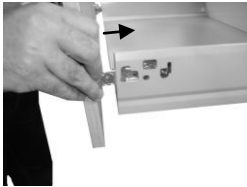
4/ Retirer la façade



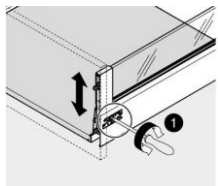
5/ Mettre en position les inserts de tiroir



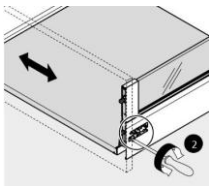
6/ Mettre la façade



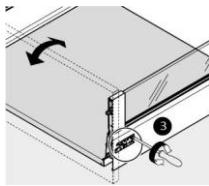
REGLAGE



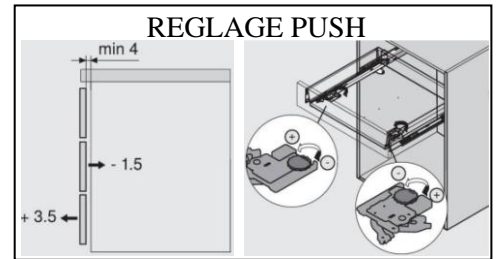
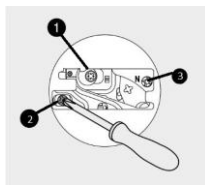
Réglage en hauteur



Réglage latéral

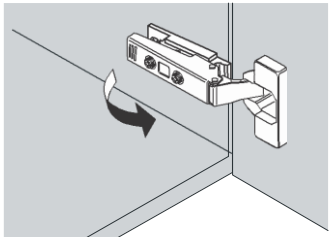


Réglage de l'inclinaison



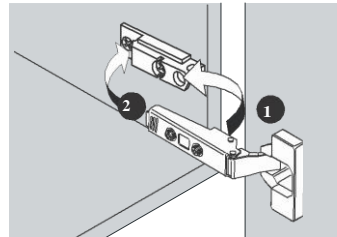
PORTES

DEMONTAGE

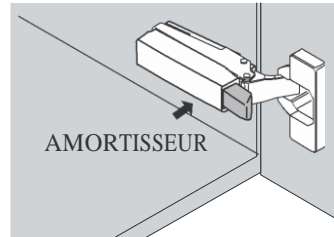


Attraper la charnière par le "clapet" arrière et tirer vers l'avant (Ne jamais démonter l'embase)

MONTAGE



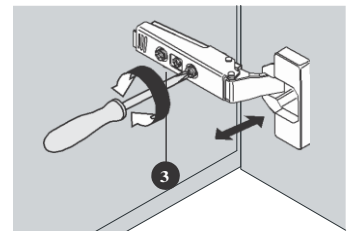
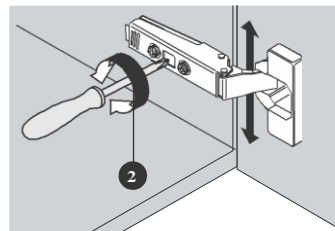
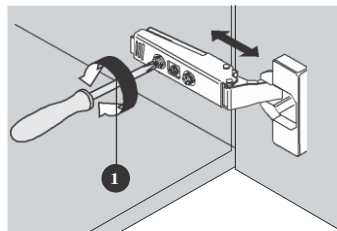
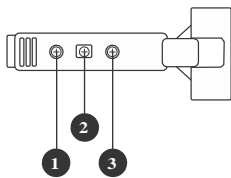
Emboîter (1) rabattre et clipser (2).



Après réglage, placer 1 amortisseur par porte et non 1 par charnière

Après réglage, placer les caches sur les autres charnières

REGLAGE



FASCIA REPLACEMENT

UK

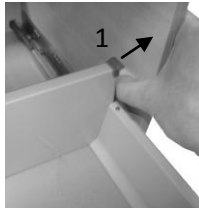
G039V1.1

DRAWERS

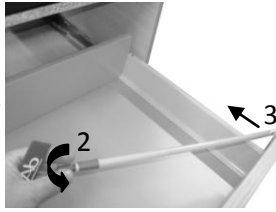
FASCIA DISMANTLING



1/ Removing lateral cover



2/ Removing longside gallery rail



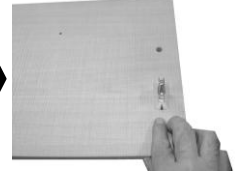
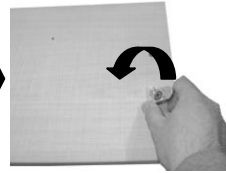
3/ Unscrew the screws of the fascia front stabilizer (on the underneath of the drawer)



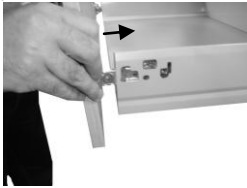
4/ Removing the fascia



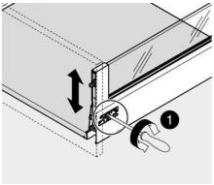
5/ Straighten the fascia clips



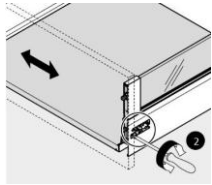
6/ Fix the fascia



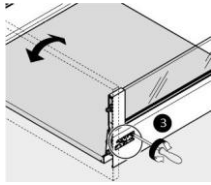
ADJUSTEMENT



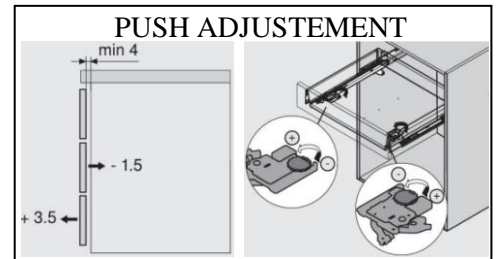
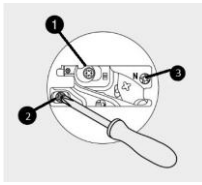
Height adjustment



Lateral adjustment

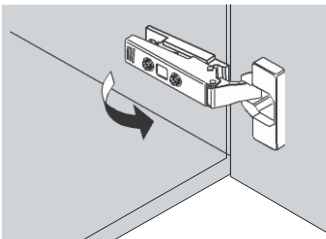


Angular adjustment



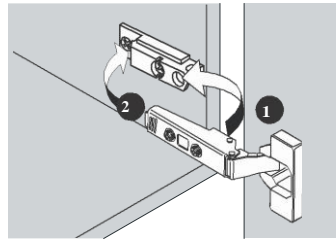
DOORS

UNCLIP

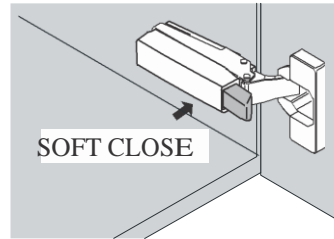


Squeeze the flap at the rear of the hinge and pull forward. Never remove the hinge plates that are screwed onto the carcass

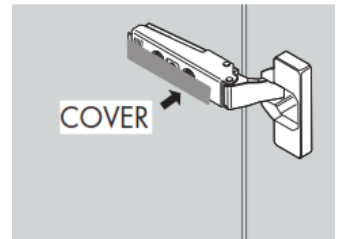
CLIP



Align the bar on the hinge into the groove in the plate (1) and clip the hinge backwards into position (2)



After adjustment, fit 1 soft close per door and not 1 per hinge



After adjustment, fit the Ab covers onto the other hinges

ADJUSTMENT

