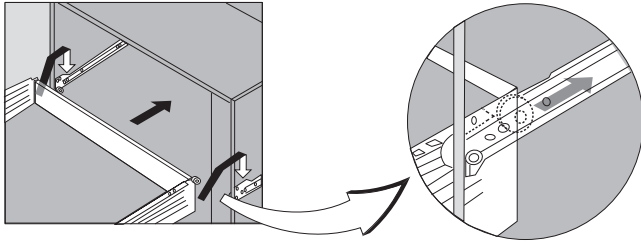
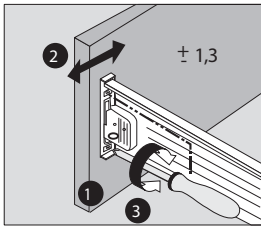


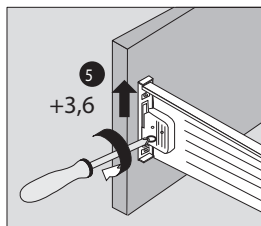
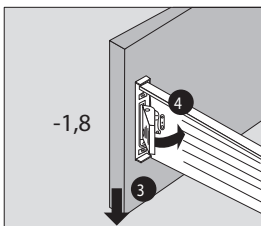
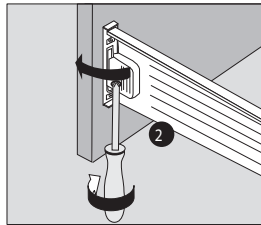
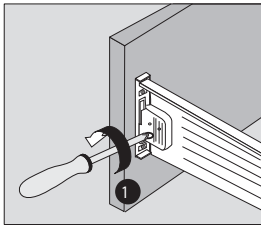
**1** ACCROCHAGE ET DECROCHAGE DU TIROIR  
INSERT AND REMOVE THE DRAWER



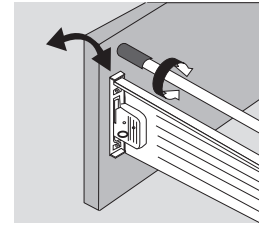
**2** REGLAGE LATERAL  
SIDE ADJUSTMENT



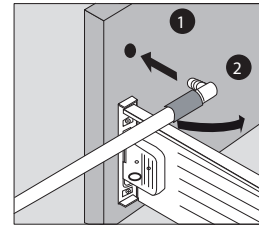
**3** REGLAGE EN HAUTEUR  
HEIGHT ADJUSTMENT



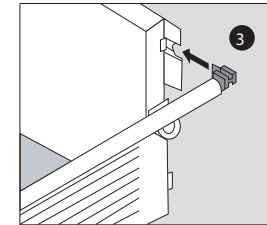
**4** REGLAGE DE L'INCLINAISON  
ADJUSTING THE INCLINATION



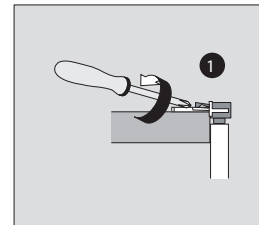
**5** MONTAGE - DEMONTAGE DES RIDELLES  
FITTING - REMOVING SIDE RACKS



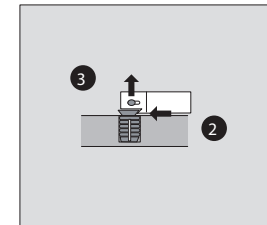
MONTAGE A L'AVANT  
INSTALLATION AT THE FRONT



MONTAGE A L'ARRIERE  
INSTALLATION AT BACK



DEMONTAGE A L'ARRIERE  
UNDO THE BACK



DEMONTAGE A L'AVANT  
UNDO THE FRONT