

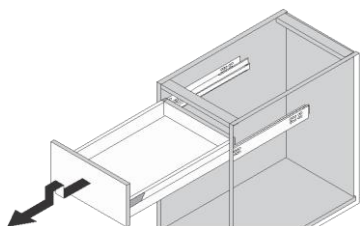
RÉGLAGES DES PORTES & TIROIRS

Une fois le meuble posé vérifier les niveaux puis :

- Placer les tiroirs et les portes
- Régler les façades
- Mettre les caches de finition
- Revoir les réglages une fois les tiroirs chargés

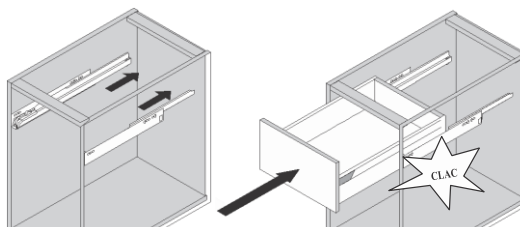
TIROIRS

DEMONTAGE DU TIROIR



Tirer, à la butée suivre le mouvement de la flèche ci-dessus, tirer à nouveau

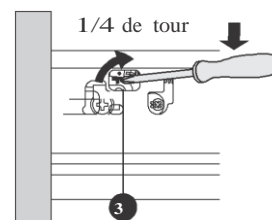
MONTAGE DU TIROIR



Rentrer les coulisses

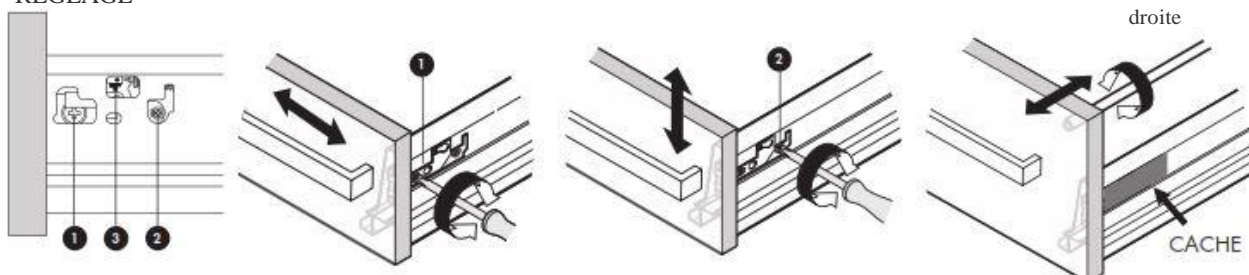
Enfoncer le tiroir jusqu'à l'enclenchement

DEMONTAGE DE LA FAÇADE

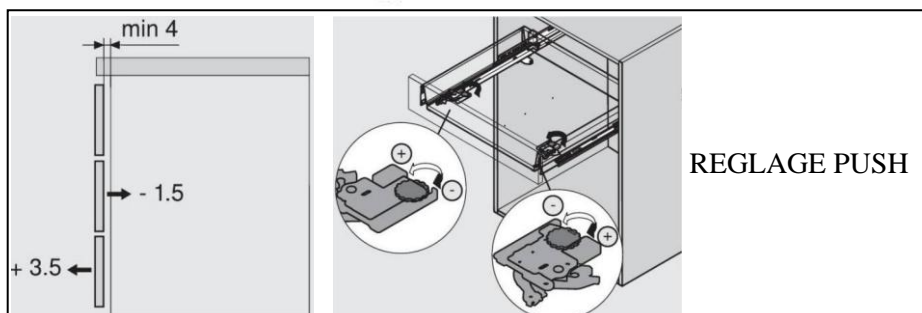


En cas de besoin introduire le tournevis cruciforme dans la croix en soulevant le clapet et faire 1/4 de tour vers la droite

REGLAGE



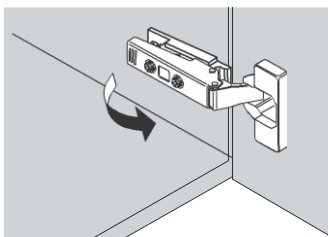
Régler la ridelle dans le cas de tiroirs Haut



REGLAGE PUSH

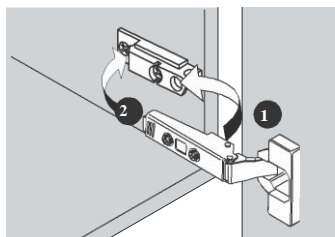
PORTES

DEMONTAGE

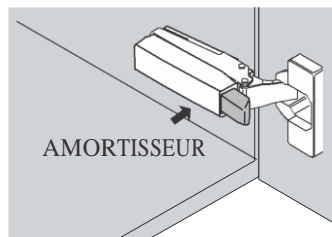


Attraper la charnière par le "clapet" arrière et tirer vers l'avant (Ne jamais démonter l'embase)

MONTAGE



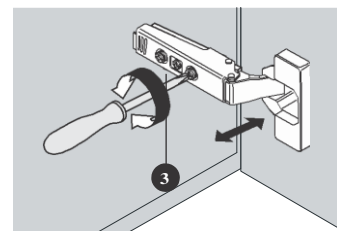
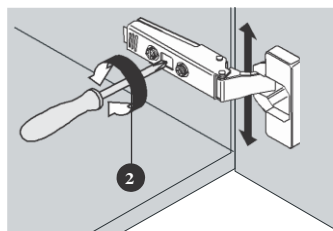
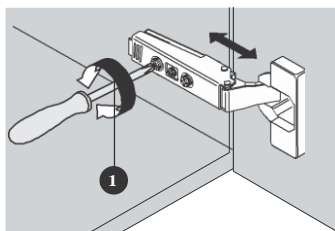
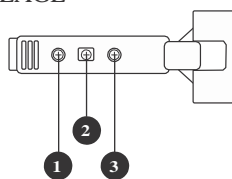
Emboîter (1) rabattre et clipser (2).



Après réglage, placer 1 amortisseur par porte et non 1 par charnière

Après réglage, placer les caches sur les autres charnières

REGLAGE



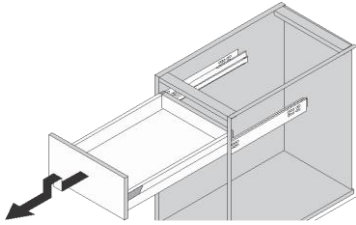
ADJUSTMENT OF DOORS AND DRAWERS

Once the units are installed check that they are level:

- Fit the drawers and doors - Clip-on adjustment covers
- Adjust the fascias

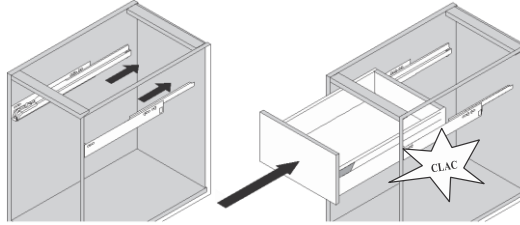
DRAWERS

REMOVING THE DRAWER



Pull; when it is fully open lift and continue to pull gently, following the movement of the arrow.

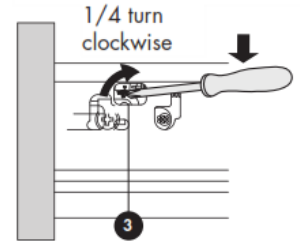
INSTALLING THE DRAWER



Push the runners inside the unit fully

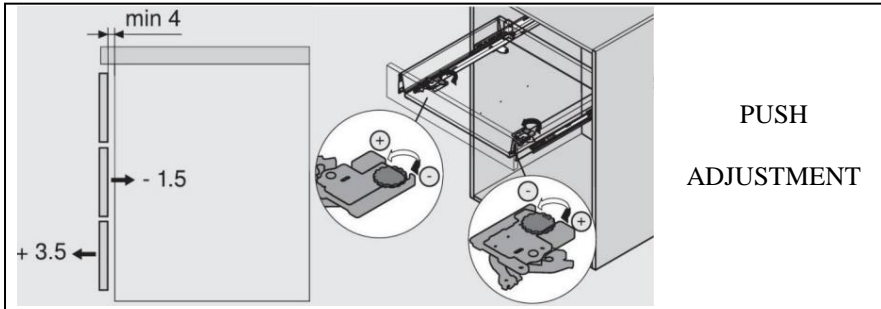
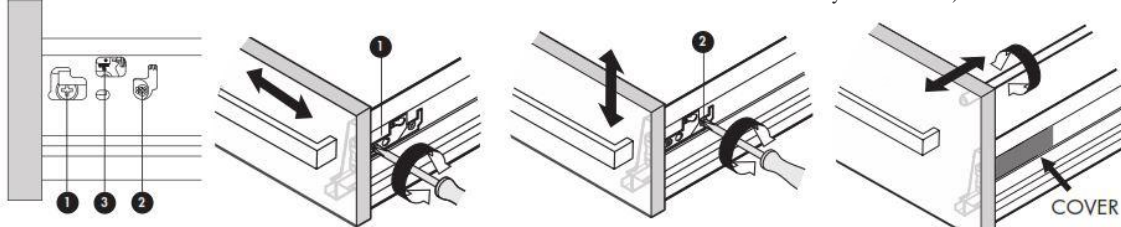
Sit the drawer onto the runners and then, ensuring that it is level, push the drawer in firmly until it locks into position. (It will feel incorrect, but if you open and reclose the drawer it will automatically reseal itself.)

REMOVING THE FASCIA



Insert the screwdriver in the cross slot and lift up the flap

ADJUSTMENT

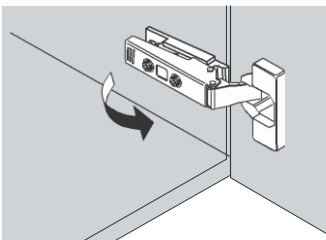


PUSH
ADJUSTMENT

Adjust tall fascias by turning the top bar

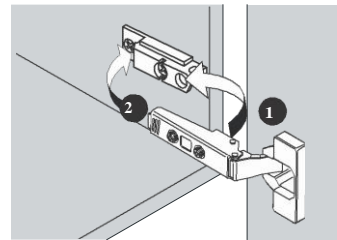
DOORS

UNCLIP

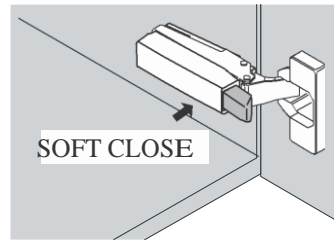


Squeeze the flap at the rear of the hinge and pull forward. Never remove the hinge plates that are screwed onto the carcass

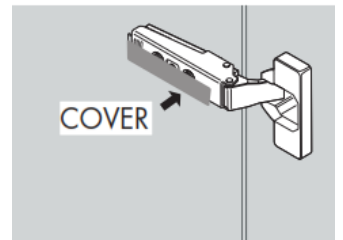
CLIP



Align the bar on the hinge into the groove in the plate (1) and clip the hinge backwards into position (2)



After adjustment, fit 1 soft close per door and not 1 per hinge



After adjustment, fit the Ab covers onto the other hinges

ADJUSTMENT

