

REGLAGE TIROIR BLANC / DRAWER ADJUSTMENT

G031V1.1

FR/UK

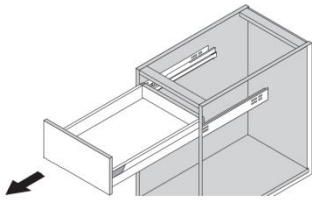
Une fois le meuble posé vérifier les niveaux puis :

- Placer les tiroirs
- Régler les façades
- Mettre caches de finition
- Revoir les réglages une fois les tiroirs chargés

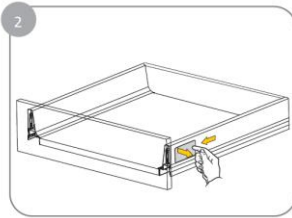
Once the units are installed check the level then :

- Fit the drawers
- Adjust the fascias
- Fit covers
- Readjust the drawer when it's filled

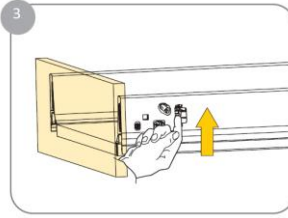
DEMONTAGE DU TIROIR / REMOVING THE DRAWER



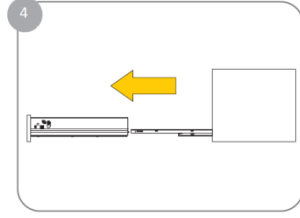
1. Sortir le tiroir /
Take out the drawer



2. Démontez le cache /
Remove the branded cover

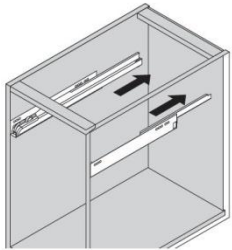


3. Soulever le clip /
lift the arrow shaped lever

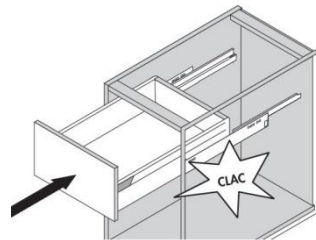


4. Tirer le tiroir /
Pull the drawer out

MONTAGE TIROIR / INSTALLING THE DRAWER

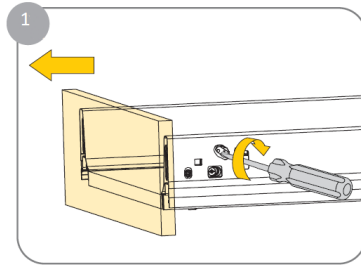


1. Rentrer les coulisses /
Push the runners into
the unit fully



2. Enfoncer le tiroir jusqu'à
l'enclenchement / Push the
drawer onto the runners until it
locks into position

DEMONTAGE FACADE / REMOVING THE FASCIA

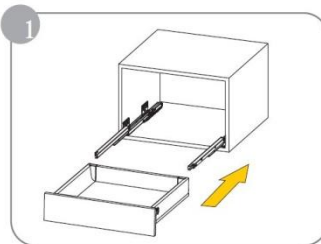


1. Déverrouiller le
système / Unlock the
systeme

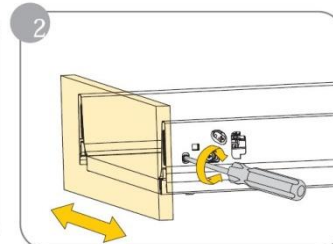
REGLAGE / ADJUSTMENT



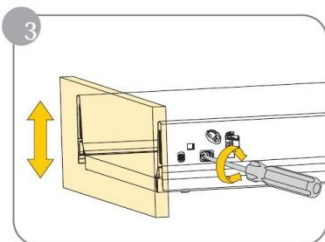
2 3



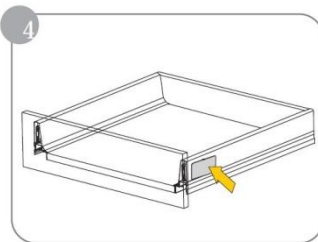
1. Remettre le tiroir /
Fit the drawer



2. Réglage largeur /
Lateral adjustment



3. Réglage hauteur /
Vertical adjustment



4. Remettre le cache /
Refit the branded cover